

Section 23

Tina5s User Guide – Managing AutoCAD Xrefs

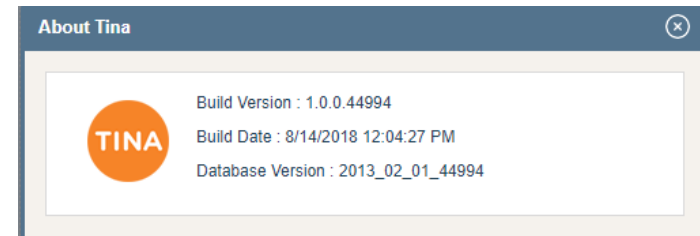
[Xref Overview](#)

[Common Use Scenario 1 – Parent and Xrefs Already in Tina \(Consider Xref On\)](#)

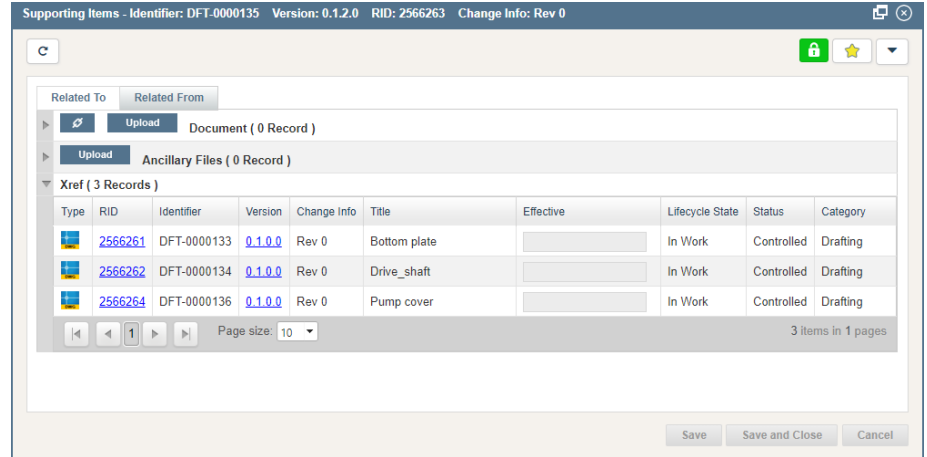
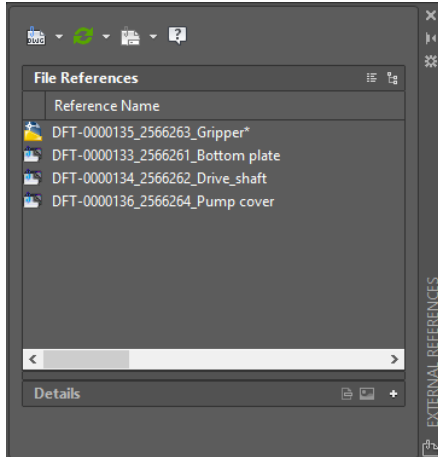
[Common Use Scenario 1 – Parent and Xrefs Already in Tina \(Consider Xref Off\)](#)

[Adding Xrefs](#)

[Detaching Xrefs](#)



Xref Overview



- Use AutoCAD (as usual) to Attach or Detach Xrefs to your DWG files
- Changes made are always reflected to Tina's Supporting Items via TinaSync and the Tina AutoCAD Plugin
- The list of Xrefs in Tina cannot be changed in Tina, only in AutoCAD

Xref Overview (Cont'd)

Manage Devices Notification Settings My Default Settings My Workflow Templates

Default Language English (US)

Default Date-Time Format dd/mm/yyyy

Default Time Zone Select Country

Show Dashboard Default Landing Page Favorite

Favorites Page Defaults When locking files, automatically link them to my Favorites root folder
 When unlocking files, automatically de-link them from folders in my Favorites (if you choose this behavior, files will also be sync'd off when they are de-linked)

Search Defaults When searching, show results from inactive categories

Sync Defaults When I choose to download from the web, and the file is available from TinaSync, don't download it – just open it from TinaSync

Workflow Defaults When I add (+) steps to a Workflow, create a new row in the Workflow grid

New User Checklist When I sign in, the New User Checklist pop up will present

External Repositories When searching, include results from all external repositories that Tina is connected to

Consider X-Ref Consider Xref While Downloading, D-link & deleting drawing file

Hide on UI

Save Changes Cancel

If this box is checked:

1. When you sync a Parent DWG in your Favorites that has Xrefs, all Xrefs will be added to your Favorites root folder with Sync toggled on.
2. When you toggle sync off on the Parent DWG, sync will also toggle off for the Xrefs
3. When you de-link the Parent DWG, the Xrefs will automatically de-link also

Use this configuration if you'll be referring to, or concurrently authoring the Xrefs. With this box checked, Xref integrity is automatically retained – when you open the Parent in AutoCAD, there will be no unresolved reference files.

If this box is not checked:

1. When you sync a Parent DWG to your Favorites that has Xrefs, no Xrefs will be added to your Favorites.

Use this configuration if you have no interest in the Xrefs. Note that if this box is unchecked, and the file has Xrefs, when you open the file in AutoCAD the 'Unresolved References' pop up will be presented (ignore and continue).

Common Use Scenario 1 – Parent File and Xrefs All In Tina

Consider X-Ref



Common Use Scenario 1 – Parent File and Xrefs All In Tina

Consider X-Ref

1

After you find the file you'll be working on, link it and sync it to your Favorites

Because the 'Consider Xrefs' box is checked, all Xrefs automatically link to your Favorites root folder with sync toggled on

Note that this file has 3 Xrefs

Supporting Items - Identifier: DFT-0000135 Version: 0.1.5.0 RID: 2566263 Change Info: Rev 0

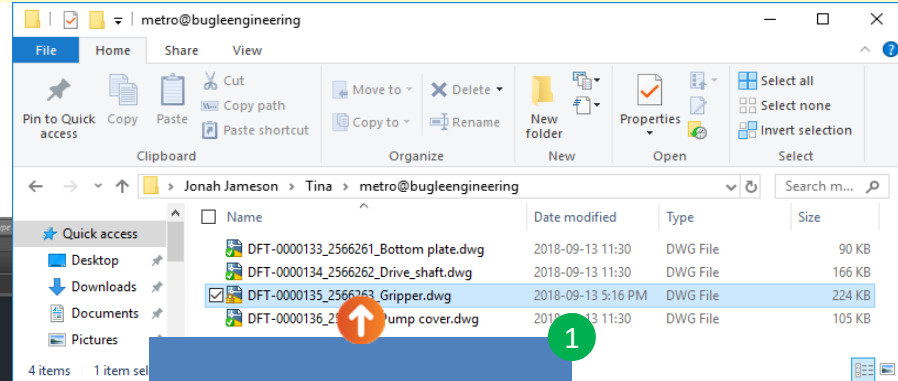
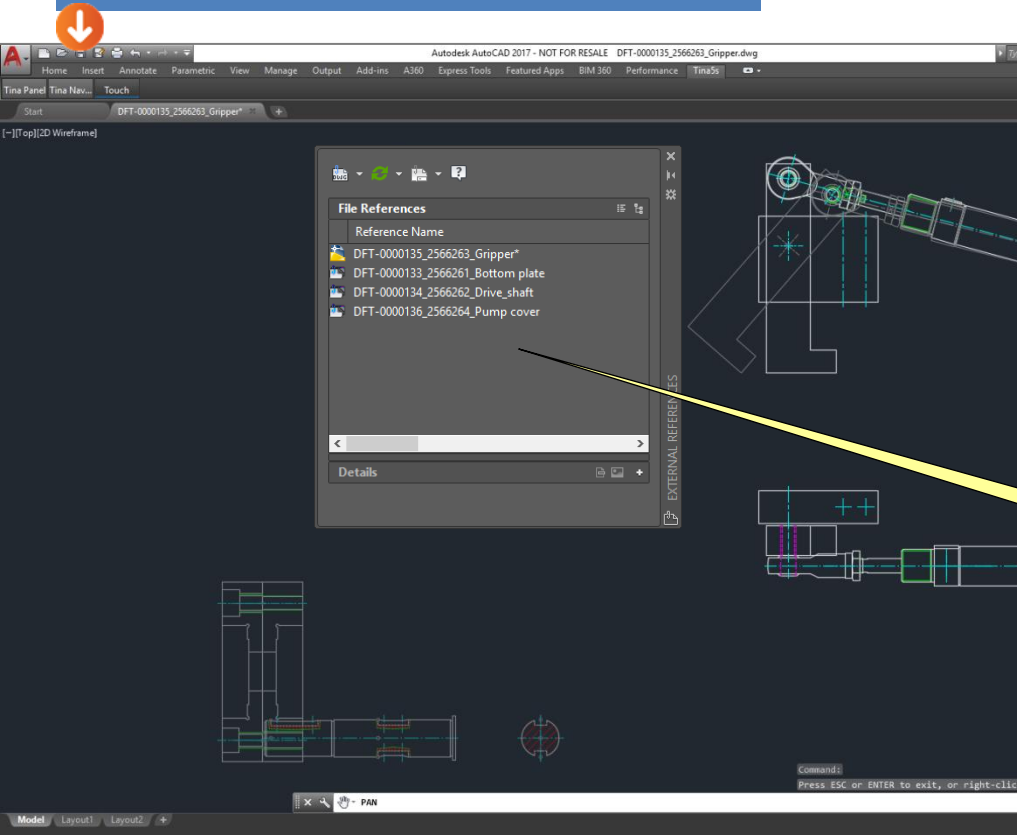
Type	RID	Identifier	Version	Change Info	Title	Effective	Lifecycle State	Status	Category
DWG	2566261	DFT-0000133	0.1.0.0	Rev 0	Bottom plate		In Work	Controlled	Drafting
DWG	2566262	DFT-0000134	0.1.0.0	Rev 0	Drive_shaft		In Work	Controlled	Drafting
DWG	2566264	DFT-0000136	0.1.0.0	Rev 0	Pump cover		In Work	Controlled	Drafting

Type	RID	Identifier	Version	Change Info	Title	Effective	Lifecycle State	Status	Category
DWG	2566263	DFT-0000135	0.1.5.0	Rev 0	Gripper	13/09/2018	In Work	Controlled	Drafting
DWG	2566264	DFT-0000136	0.1.0.0	Rev 0	Pump cover	13/09/2018	In Work	Controlled	Drafting
DWG	2566262	DFT-0000134	0.1.0.0	Rev 0	Drive_shaft	13/09/2018	In Work	Controlled	Drafting
DWG	2566261	DFT-0000133	0.1.0.0	Rev 0	Bottom plate	13/09/2018	In Work	Controlled	Drafting

Common Use Scenario 1 – Parent File and Xrefs All In Tina

Work on the file as usual - saved changes will be automatically uploaded via TinaSync.

2

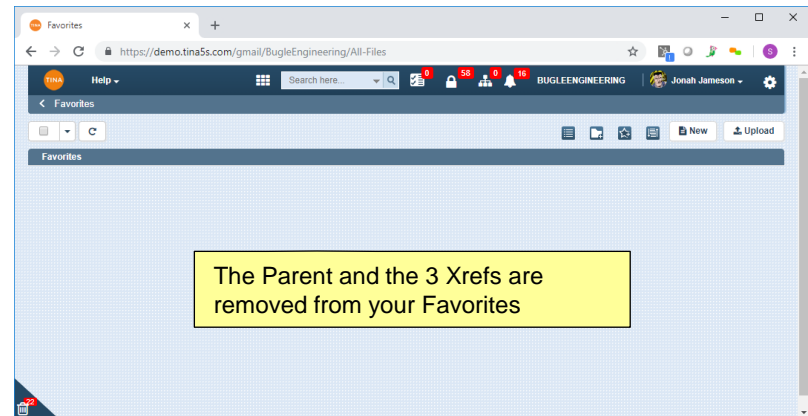
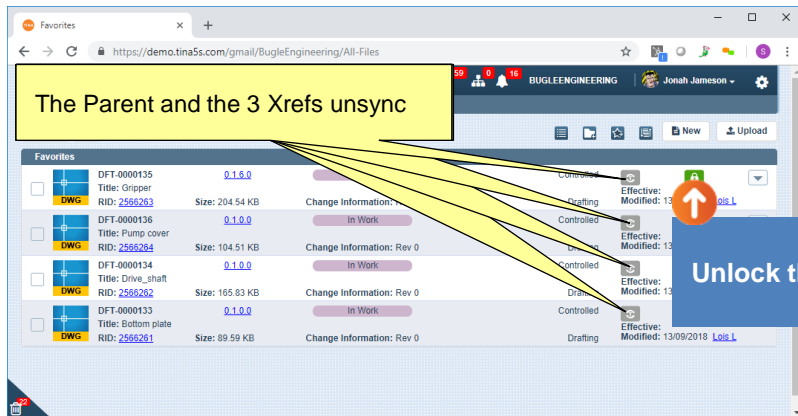
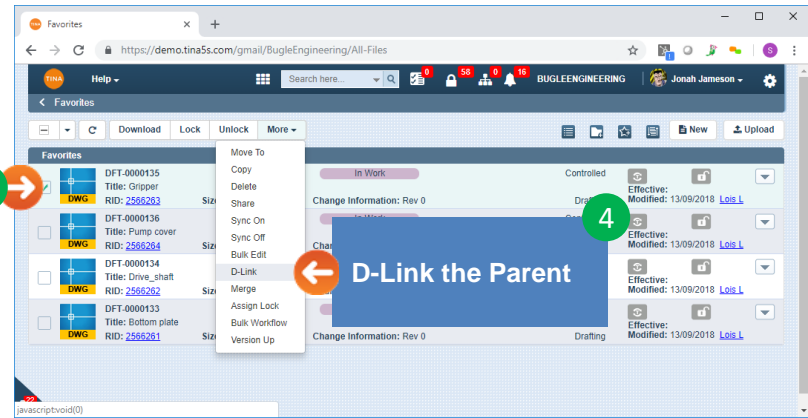
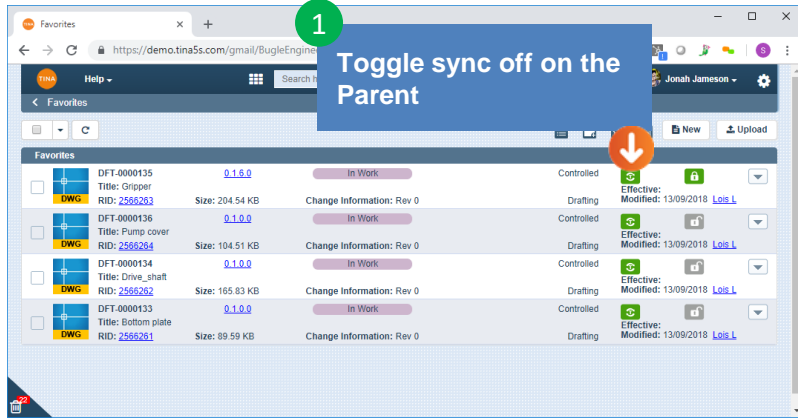


The Parent and all Xrefs are now available in your local TinaSync folder.

Double click to open the Parent file in AutoCAD.

The Xrefs relationships are stored in Tina and transferred during the syncing process.

Common Use Scenario 1 – Parent File and Xrefs All In Tina



Go back to [Section 23: Managing AutoCAD Xrefs](#) or continue.

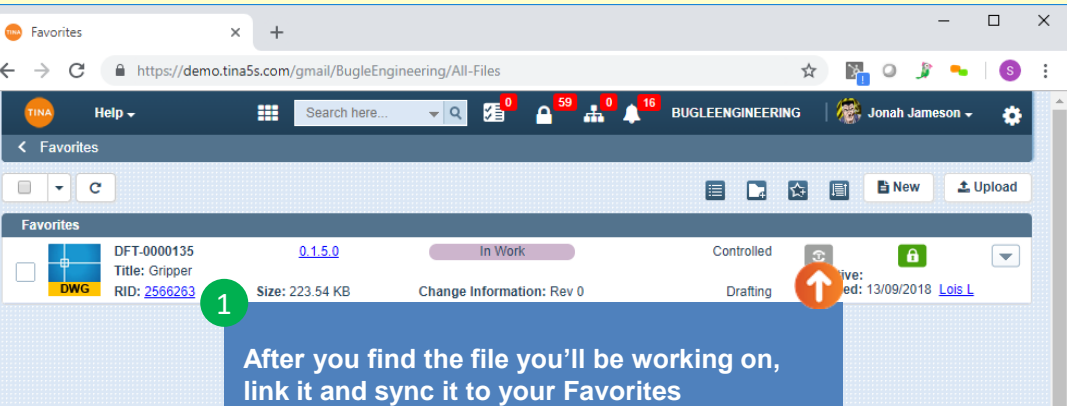
Common Use Scenario 2 – Parent File and Xrefs All In Tina

Consider X-Ref



Common Use Scenario 2 – Parent File and Xrefs All In Tina

Consider X-Ref



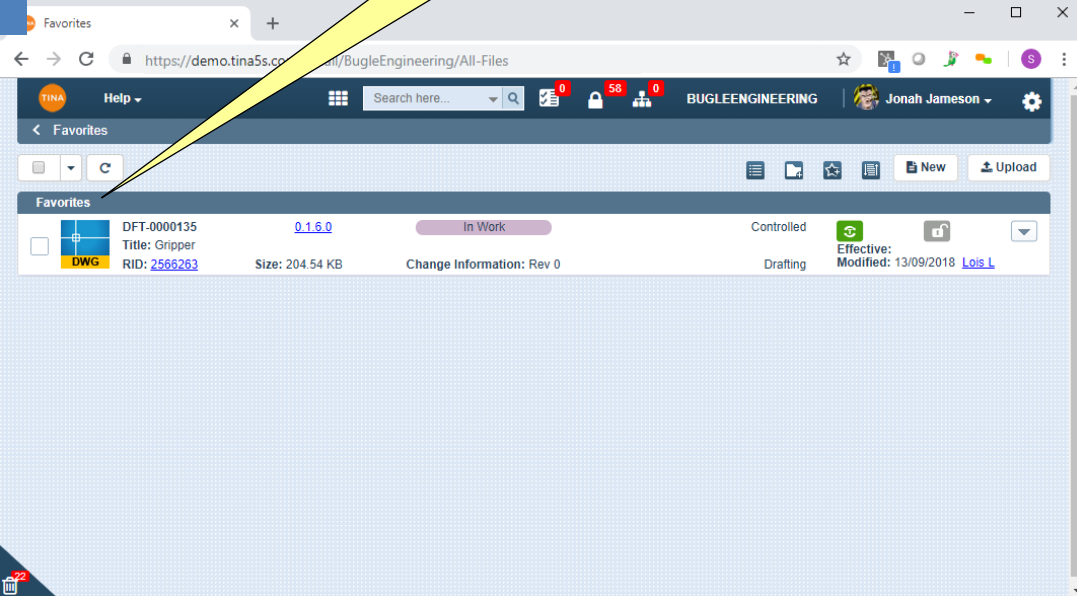
1 After you find the file you'll be working on, link it and sync it to your Favorites

Note that this file has 3 Xrefs

The Xref dialog box displays a table with 3 records. The columns are Type, RID, Identifier, Version, Change Info, Title, Effective, Lifecycle State, Status, and Category.

Type	RID	Identifier	Version	Change Info	Title	Effective	Lifecycle State	Status	Category
	2566261	DFT-0000133	0.1.0.0	Rev 0	Bottom plate		In Work	Controlled	Drafting
	2566262	DFT-0000134	0.1.0.0	Rev 0	Drive_shaft		In Work	Controlled	Drafting
	2566264	DFT-0000136	0.1.0.0	Rev 0	Pump cover		In Work	Controlled	Drafting

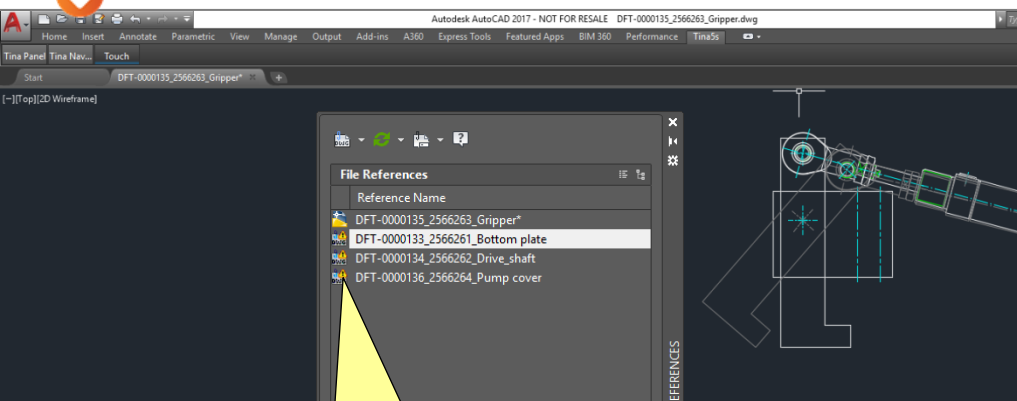
Because the 'Consider Xrefs' box is checked, all Xrefs automatically link to your Favorites root folder with sync toggled on



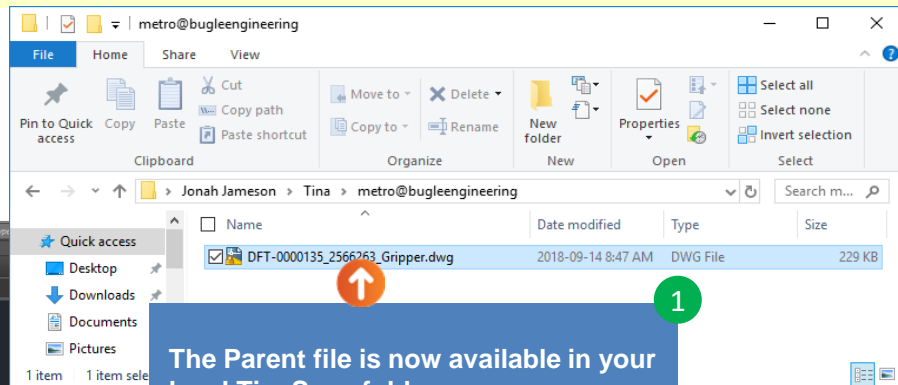
Common Use Scenario 2 – Parent File and Xrefs All In Tina

Work on the file as usual - saved changes will be automatically uploaded via TinaSync.

3



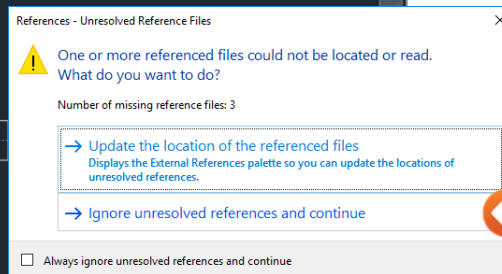
Because the Xrefs are not sync'd, they did not download to your local TinaSync Favorites root folder (hence the Xref warnings).



The Parent file is now available in your local TinaSync folder.

Double click to open it in AutoCAD.

1



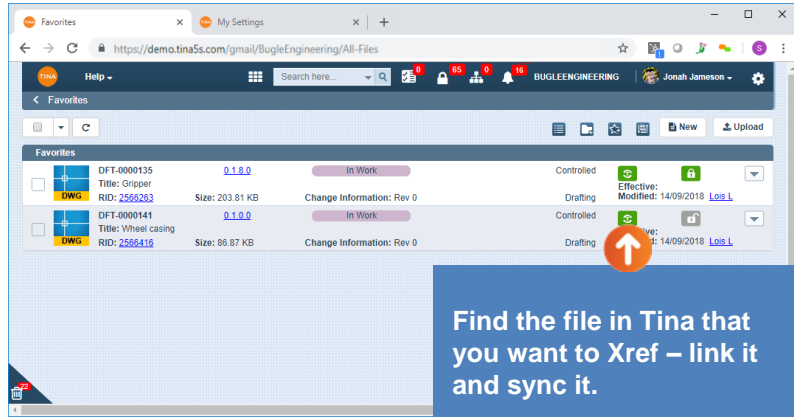
Choose Ignore

2

Go back to [Section 23: Managing AutoCAD Xrefs](#) or continue.

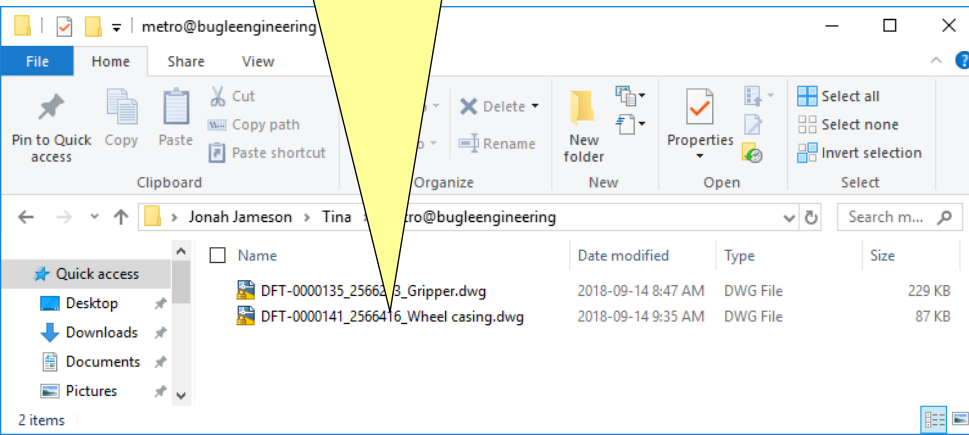
Adding Xrefs

Adding Xrefs (if they're already in Tina)

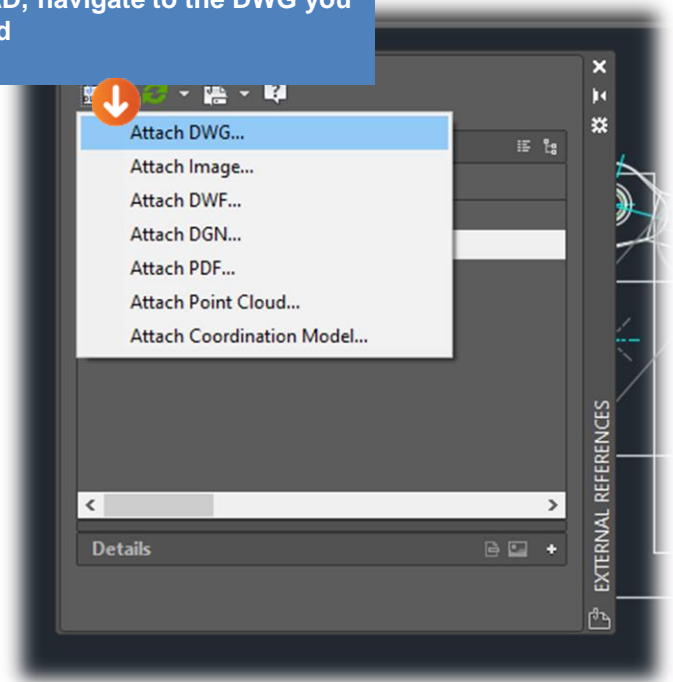


1
Find the file in Tina that you want to Xref – link it and sync it.

The file you want to Xref is now available in your TinaSync folder. This means that you can navigate to it while in AutoCAD.



2
In AutoCAD, navigate to the DWG you just sync'd



Adding Xrefs (if they're already in Tina)

Autodesk AutoCAD 2017 - NOT FOR RESALE DFT-0000135_2566263_Gripper.dwg

3

Save the changes

File References

- DFT-0000135_2566263_Gripper
- DFT-0000133_2566261_Bottom plate
- DFT-0000134_2566262_Drive_shaft
- DFT-0000136_2566264_Pump cover
- DFT-0000141_2566416_Wheel casing

EXTERNAL REFERENCES

Supporting Items - Identifier: DFT-0000135 Version: 0.1.8.0 RID: 2566263 Change Info: Rev 0

Related To: Document (0 Record)

Related From: Ancillary Files (0 Record)

Xref (4 Records)

Type	RID	Identifier	Version	Change Info	Title	Effective	Lifecycle State	Status	Category
	2566261	DFT-0000133	0.1.0.0	Rev 0	Bottom plate		In Work	Controlled	Drafting
	2566262	DFT-0000134	0.1.0.0	Rev 0	Drive_shaft		In Work	Controlled	Drafting
	2566264	DFT-0000136	0.1.0.0	Rev 0	Pump cover		In Work	Controlled	Drafting
	2566416	DFT-0000141	0.1.0.0	Rev 0	Wheel casing		In Work	Controlled	Drafting

Page size: 10 4 items in 1 pages

Save Save and Close Cancel

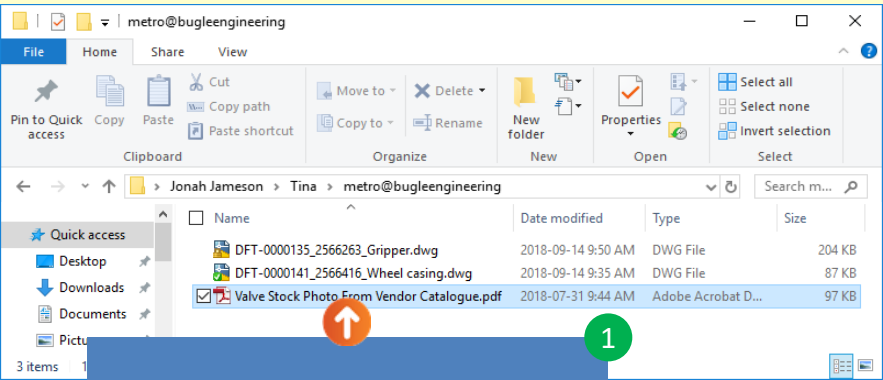
The new Xref relationship is automatically updated in Tina

Model Layout1 Layout2 +

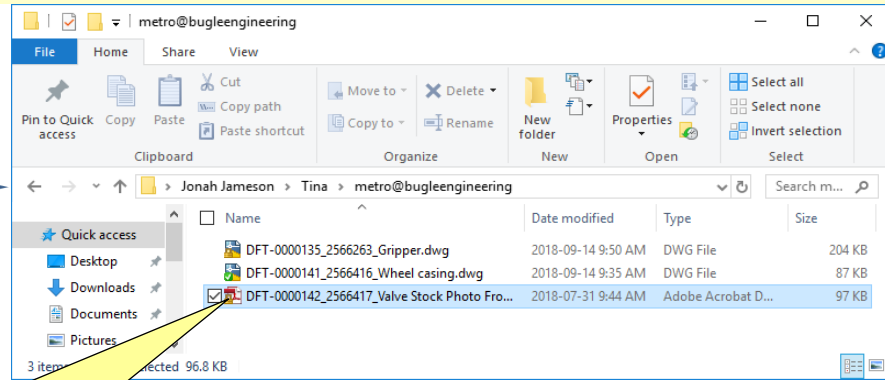
MODEL

9:43 AM
2018-09-14

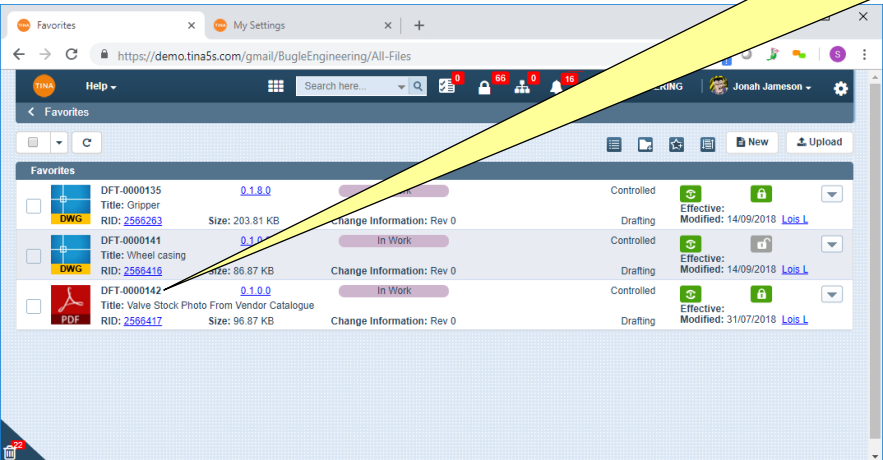
Adding Xrefs (if they're not in Tina)



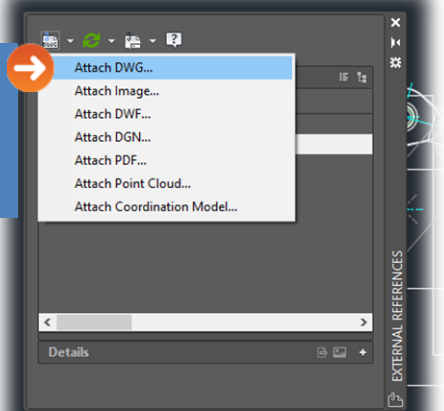
1
Drag and drop (or copy) the file you need to Xref to any folder in TinaSync



The file will be uploaded to Tina. Note that the file name in TinaSync will change based on the category you have mapped your folder to.



2
Assuming the Parent is open, Attach Xref as usual in AutoCAD and save changes



After saving, the new Xref relationship will be automatically updated in Tina

Go back to [Section 23: Managing AutoCAD Xrefs](#) or continue.

Detaching Xrefs

Adding Xrefs (that are in Tina)

File References

- DFT-0000135_2566263_Gripper*
- DFT-0000133_2566261_Bottom plate
- DFT-0000134_2566262_Drive_shaft
- DFT-0000136_2566264_Pump cover
- DFT-0000141_2566416_Valve Stock Photo From Vendor Catalogue
- DFT-0000142_2566417_Valve Stock Photo From Vendor Catalogue

Open
Attach...
Unload
Reload
Detach
Bind...
Xref Type >
Path >

Supporting Items - Identifier: DFT-0000135 Version: 0.1.12.0 RID: 2566263 Change Info: Rev 0

Related To Related From

Upload Document (0 Record)

Upload Ancillary Files (0 Record)

Xref (5 Records)

Type	RID	Identifier	Version	Change Info	Title	Effective	Lifecycle State	Status
	2566261	DFT-0000133	0.1.0.0	Rev 0	Bottom plate		In Work	Controlled
	2566262	DFT-0000134	0.1.0.0	Rev 0	Drive_shaft		In Work	Controlled
	2566264	DFT-0000136	0.1.0.0	Rev 0	Pump cover		In Work	Controlled
	2566416	DFT-0000141	0.1.0.0	Rev 0	Wheel casing		In Work	Controlled
	2566417	DFT-0000142	0.1.0.0	Rev 0	Valve Stock Photo From Vendor Catalogue		In Work	Controlled

Save Save and Close Cancel

1 Detach the Xref

Before Detaching in AutoCAD, Xrefs match between AutoCAD and in Tina...

After detaching in AutoCAD and saving, Xrefs again match between AutoCAD and Tina...

2 Save changes

Tina Panel Tina Nav... Touch

Start DFT-0000135_2...

[-][Top][2D Wireframe]

Supporting Items - Identifier: DFT-0000135 Version: 0.1.12.0 RID: 2566263 Change Info: Rev 0

Related To Related From

Upload Document (0 Record)

Upload Ancillary Files (0 Record)

Xref (4 Records)

Type	RID	Identifier	Version	Change Info	Title	Effective	Lifecycle State	Status
	2566261	DFT-0000133	0.1.0.0	Rev 0	Bottom plate		In Work	Controlled
	2566262	DFT-0000134	0.1.0.0	Rev 0	Drive_shaft		In Work	Controlled
	2566264	DFT-0000136	0.1.0.0	Rev 0	Pump cover		In Work	Controlled
	2566417	DFT-0000142	0.1.0.0	Rev 0	Valve Stock Photo From Vendor Catalogue		In Work	Controlled

Page size: 10 4 items in 1

Save Save and Close Cancel

EXTERNAL REFERENCES

2 Save changes

Go back to [Section 23: Managing AutoCAD Xrefs.](#)