

# Section 25

## Tina5s User Guide – Synchronizing AutoCAD Drawing Properties Between DWG Files and Tina

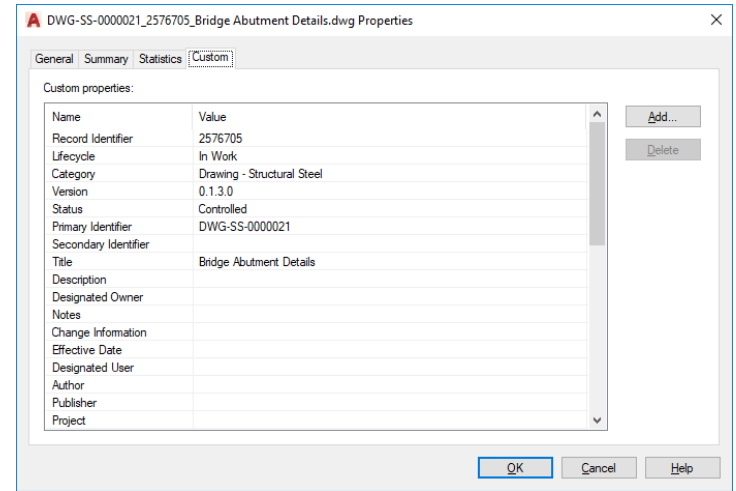
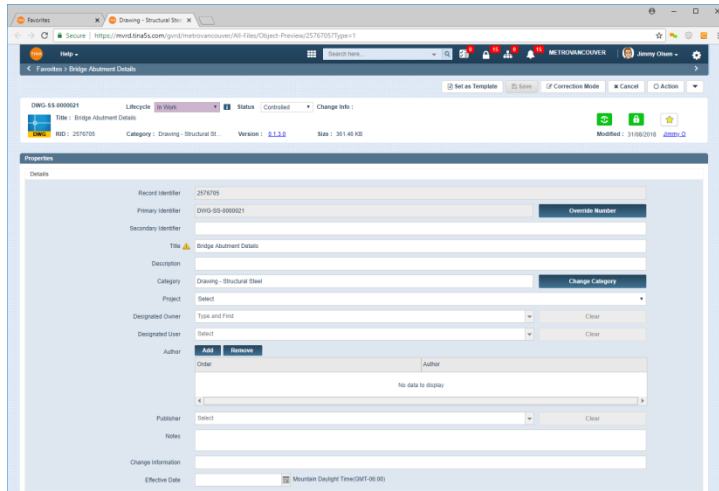
[Property Mirroring Overview](#)

[Changing File Properties In Tina \(.dwg Open\)](#)

[Changing .dwg Properties in AutoCAD](#)



# Property Mirroring Overview



Changes made to Properties in Tina will always be reflected in the AutoCAD .dwg file Properties (Custom Tab) and vice versa.

- If the file is closed in AutoCAD, changes made (and saved) in Tina will automatically appear in the AutoCAD .dwg Properties (Custom Tab) the next time the file is opened
- If the file is open in AutoCAD, changes can still be made – either from Tina, or in AutoCAD (see the following slides for additional information)

Scenario (1)

Change File Properties In Tina (.dwg Open)

# (1) Change File Properties In Tina (.dwg Open)

Click on the 'Properties' button in the Tina Navigation panel (alternatively, you can use the following command: TINAPROPERTIES)

## Surface (Planar)

Color  ByLayer  
Layer 0  
Linetype ByLayer

# (1) Change File Properties In Tina (.dwg Open)

DWG-SS-0000021 Lifecycle: In Work Status: Controlled

Title: Bridge Abutment Details

RID: 2576705 Category: Drawing - Structural Steel Version: 0.13.0 Size: 361.46 KB

Buttons: Set as Template, Save, Correction Mode, Cancel, Action

Save your changes

### Properties

#### Details

Record Identifier: 2576705

Primary Identifier: DWG-SS-0000021

Secondary Identifier: [Empty]

Title: Bridge Abutment Details

Description: Mid-Span and Ends

Category: Drawing - Structural Steel

Project: Select

Designated Owner: Type and Find

Designated User: Select

Author: Add Remove

Order	Author
No data to display	

Publisher: Select

Notes: [Empty]

1 Edit any field in Tina (in this example, we'll add a Description)

If you're already logged into Tina, the properties page will present (if you're not logged into Tina, you'll need to login then the properties page will appear).

2 Save your changes

3 Navigate back to AutoCAD

# (1) Change File Properties In Tina (.dwg Open)

Click on the 'Update Custom Properties' button in the Tina Navigation panel. Alternatively, you can use the following command:

**UPDATECUSTOMPROPERTIES**

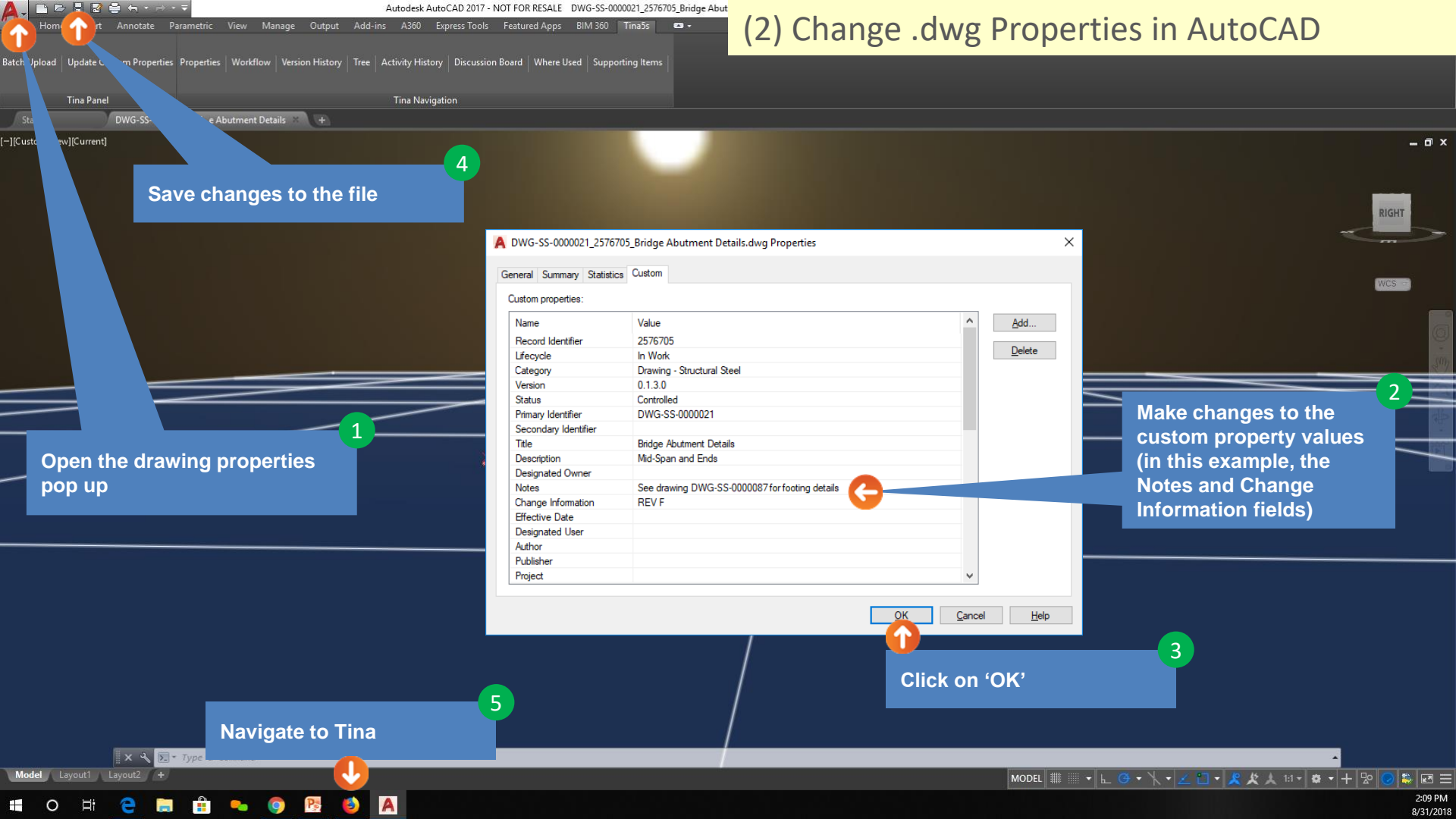
Name	Value
Record Identifier	2576705
Lifecycle	In Work
Category	Drawing - Structural Steel
Version	0.1.3.0
Status	Controlled
Primary Identifier	DWG-SS-0000021
Secondary Identifier	
Title	Bridge Abutment Details
Description	Mid-Span and Ends
Designated Owner	
Notes	
Change Information	
Effective Date	
Designated User	
Author	
Publisher	
Project	

All .dwg custom property fields now reflect changes made in Tina

Scenario (2)

Change .dwg Properties in AutoCAD

## (2) Change .dwg Properties in AutoCAD



Save changes to the file

Open the drawing properties pop up

Make changes to the custom property values (in this example, the Notes and Change Information fields)

Click on 'OK'

Navigate to Tina

DWG-SS-0000021\_2576705\_Bridge Abutment Details.dwg Properties

General Summary Statistics Custom

Custom properties:

Name	Value
Record Identifier	2576705
Lifecycle	In Work
Category	Drawing - Structural Steel
Version	0.1.3.0
Status	Controlled
Primary Identifier	DWG-SS-0000021
Secondary Identifier	
Title	Bridge Abutment Details
Description	Mid-Span and Ends
Designated Owner	
Notes	See drawing DWG-SS-0000087 for footing details
Change Information	REV F
Effective Date	
Designated User	
Author	
Publisher	
Project	

Buttons: Add..., Delete, OK, Cancel, Help



# (2) Change .dwg Properties in AutoCAD

Browser: <https://tina5s.com/gmail/BugleEngineering/All-Files>

TINA Help Search here... [Icons: Mail, Lock, Users, Bell] BUGLEENGINEERING Jimmy Olsen [Settings]

Favorites > Bridge Abutment Details

[Set as Template] [Save] [Correction Mode] [Cancel] [Action]

DWG-SS-0000021 Lifecycle: In Work Status: Controlled Change Info: REV F

Title: Bridge Abutment Details

[DWG] RID: 2576705 Category: Drawing - Structural Steel Version: 0.13.0 Size: 405.09 KB

[Refresh] [Lock] [Star] Modified: 31/08/2018 Jimmy O

### Properties

#### Details

Record Identifier: 2576705

Primary Identifier: DWG-SS-0000021 [Generate Number]

Secondary Identifier: [Empty]

Title: Bridge Abutment Details

Description: Mid-Span and Ends

Category: Drawing - Structural Steel [Change Category]

Project: Select

Designated Owner: Type and Find [Clear]

Designated User: Select [Clear]

Author: [Add] [Remove]

Order	Author
No data to display	

Publisher: Select

Notes: See drawing DWG-SS-0000087 for footing details

Change Information: REV F

Effective Date: [Calendar] Mountain Daylight Time(GMT-06:00)

Additional Information

After refreshing (or opening) the properties page, all Tina property fields now reflect changes made in the .dwg file's custom properties

Windows Taskbar: [Icons: Start, File Explorer, Edge, Mail, Photos, Chrome, Firefox, VLC, A] 2:09 PM 8/31/2018

## (2) Change .dwg Properties in AutoCAD

**NOTE:** The values of any fields that are constrained in Tina will be checked before being changed in Tina. If constraints in Tina aren't satisfied, the values input will not be loaded.

For example, if the Author field is populated by 'ACME Engineering' (which is not available on the associated pick list in Tina), the Author field will not be populated in Tina when the file is saved.

**NOTE:** Although these fields can be edited here, the next time you open the file they'll be overwritten by their values in Tina.

DWG-SS-0000021\_2576705\_Bridge Abutment Details.dwg Properties

General Summary Statistics Custom

Custom properties:

Name	Value
Record Identifier	2576705
Lifecycle	In Work
Category	Drawing - Structural Steel
Version	0.1.3.0
Status	Controlled
Primary Identifier	DWG-SS-0000021
Secondary Identifier	
Title	Bridge Abutment Details
Description	Mid-Span and Ends
Designated Owner	
Notes	See drawing DWG-SS-0000087 for footing details
Change Information	REV F
Effective Date	
Designated User	
Author	
Publisher	
Project	

Buttons: Add... Delete

Buttons: OK Cancel Help